

## My Boreal Forest Story

Pick an artwork from the gallery and write your own story inspired by it. To get started, ask yourself: What happened right before this scene? Who is using this object? What emotions do you feel? Be as creative as you want!

---

---

---

---

---

---

---

---

---

---

---

---

---

---

---

---

---

---

---

---

---

---

---

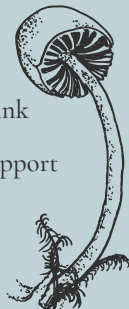
---

In a Time of Change (ITOC): Boreal Forest Stories is a project between 44 artists, writers, educators, and scientists. For over 1.5 years, participants shared knowledge and perspectives on the boreal forest and then created original works inspired by what they learned. Some of their visual art appears in this gallery exhibit, while other creations include written works and live performances.

Discovery Guide by Dana Lindauer and Molissa Udevitz  
Sketches by Dana Lindauer | Cover Graphic by Jennifer Moss  
Artwork with circles by A) The Folk School, B) Sara Tabbert, C) Kristin Link

Exhibit curated by Margo Klass, Ree Nancarrow, and Susan Campbell with support from Jennifer Moss

ITOC: Boreal Forest Stories directed by Mary Beth Leigh  
Discover more ITOC artwork at [itoc.alaska.edu](http://itoc.alaska.edu)



# IN A TIME OF CHANGE BOREAL FOREST STORIES

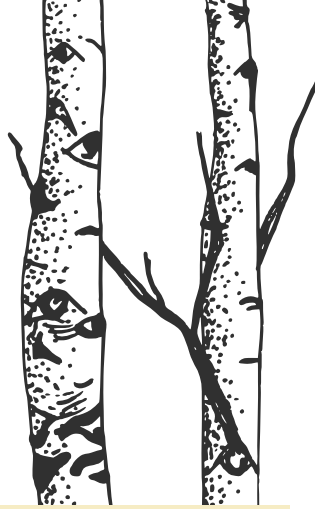
AN ARTS • HUMANITIES • SCIENCE COLLABORATIVE PROGRAM



## Exhibit Discovery Guide

## What is the Boreal Forest?

The boreal forest is an ecosystem found in Earth's northern regions, just below the Arctic, where it is still warm enough for trees to grow. Winters are long, cold, and dark while summers are short and full of daylight. The plants, animals, and people who call the boreal forest home have adapted to these extreme seasons.



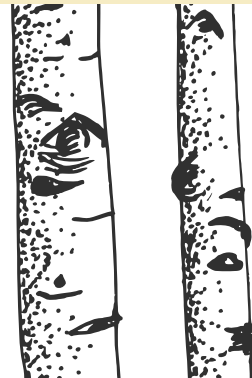
What is your favorite artwork showing the boreal forest in summer?

Title of summer artwork: \_\_\_\_\_

What artwork captures the boreal forest in winter?

Title of winter artwork: \_\_\_\_\_

Scientists are studying how the boreal forest is changing over time in Interior Alaska as part of the Bonanza Creek Long Term Ecological Research Program. Studies that last many years help scientists answer questions such as "How are increasing wildfires impacting the forest?"



Channel your inner scientist: what is a research question you want to ask to learn more about the boreal forest?

\_\_\_\_\_  
\_\_\_\_\_

What is an artwork that shows a connection between the boreal forest and wildfires?

Title of artwork: \_\_\_\_\_

## Telling Stories Through Art

Find *Solace of Circles* by artists Klara Maisch and Debbie Moderow.



What stands out to you?

What do you wonder about this set of artworks?

This set of artworks is an example of two artists working in different art forms - writing and painting - inspiring each other and collaborating. To make this piece, Debbie wrote about walking a forested trail. Then, Klara painted pieces in response to Debbie's writing. The artists explore the passing of time and how they still feel the presence of old friends when they are in the boreal forest.

Try Debbie's and Klara's process. In Box 1, write or draw about a time you have spent outside. Ask someone else to write or draw something in Box 2 that is inspired by what you did in Box 1.

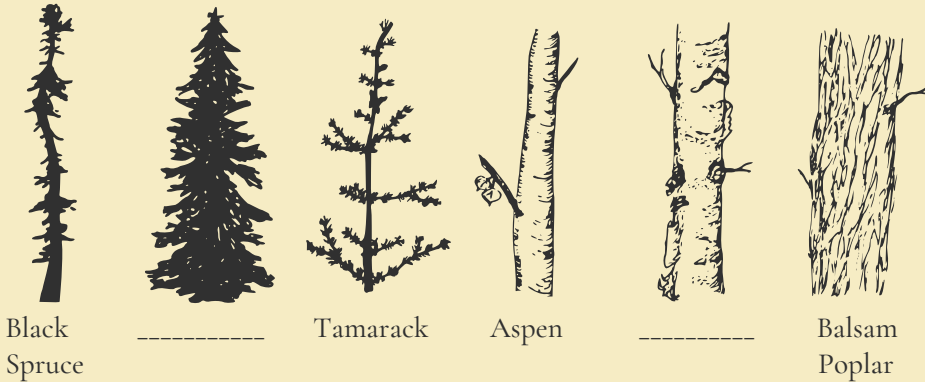
Box 1	Box 2
-------	-------

# Trees of the Boreal Forest

The boreal forest in Interior Alaska has 6 common tree types.

Can you find a piece of art where all 6 trees are included? Use this artwork to help you identify the two trees still needing labels.

Title of artwork:



Find *Come Sit with Me* by artist Margo Klass.



What materials do you see?

Which chair would you most like to sit in? Why?

This artwork is a collection of chair sculptures and small artist books. The chairs and their bases are made from natural materials found in the boreal forest, including twigs, seeds, leaves, fungus, and bones from voles. Margo wants to show how these parts of the boreal forest are deeply connected and invite us to come sit with the boreal forest to look, listen, and think.

# Looking at Art

There is no right or wrong way to look at art or to understand its meaning. Spend a few minutes looking closely at artwork and try to notice details that you did not see at first. For any artwork, think about these questions:



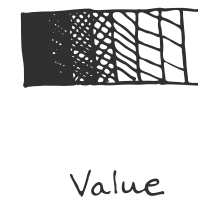
- What is going on in this artwork?
- What do you see that makes you think that?
- What else can you find?

Some artwork we cannot touch in order to protect it. Other artwork invites us to explore with our sense of touch. Look for these signs to guide you:



Check this box when you explore an artwork you can touch.

# Elements of Art



## Notice the Elements of Art

Find *Reverberations* by artist Jessie Hedden.



What elements of art do you see?  
What does this artwork remind you of?

This collage is made from cut pieces of colored paper and paper showing the texture of old floorboards. It shows the leaning trees and broken boardwalks at Creamer's Field where climate change is causing permafrost - or permanently frozen ground - to melt and become unstable. This impacts everything above ground, like the trees and boardwalks.

## Animals in the Boreal Forest

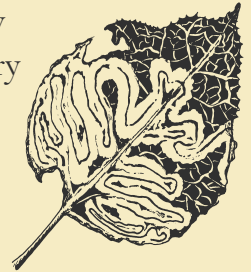
What is the smallest animal you can find in the gallery?

What is the largest? \_\_\_\_\_

Did you know that these maze-like lines on aspen leaves are made by small insects? The larvae of aspen leaf miners eat the inside of the leaves to get the energy they need to grow into moths.

How many artworks show signs of a hungry leaf miner?

Number of artworks: \_\_\_\_\_



Find *Lynx, Grouse, Aspen* by artist Todd Sherman.



How does this painting make you feel?

What colors do you see? What do these colors tell you?

This painting is a good example of how titles can help us understand art. The title *Lynx, Grouse, Aspen* identifies the animals and most of the trees in this art. Todd is known for his wildlife portraits that showcase the animals we share our planet with. Can you find more of Todd's art in the gallery?

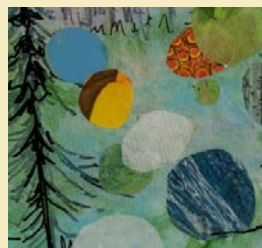
Many artists have circles in their art. Can you find these circles in the gallery? Write the artist's name under each picture.



A) Artist: \_\_\_\_\_



B) Artist: \_\_\_\_\_



C) Artist: \_\_\_\_\_